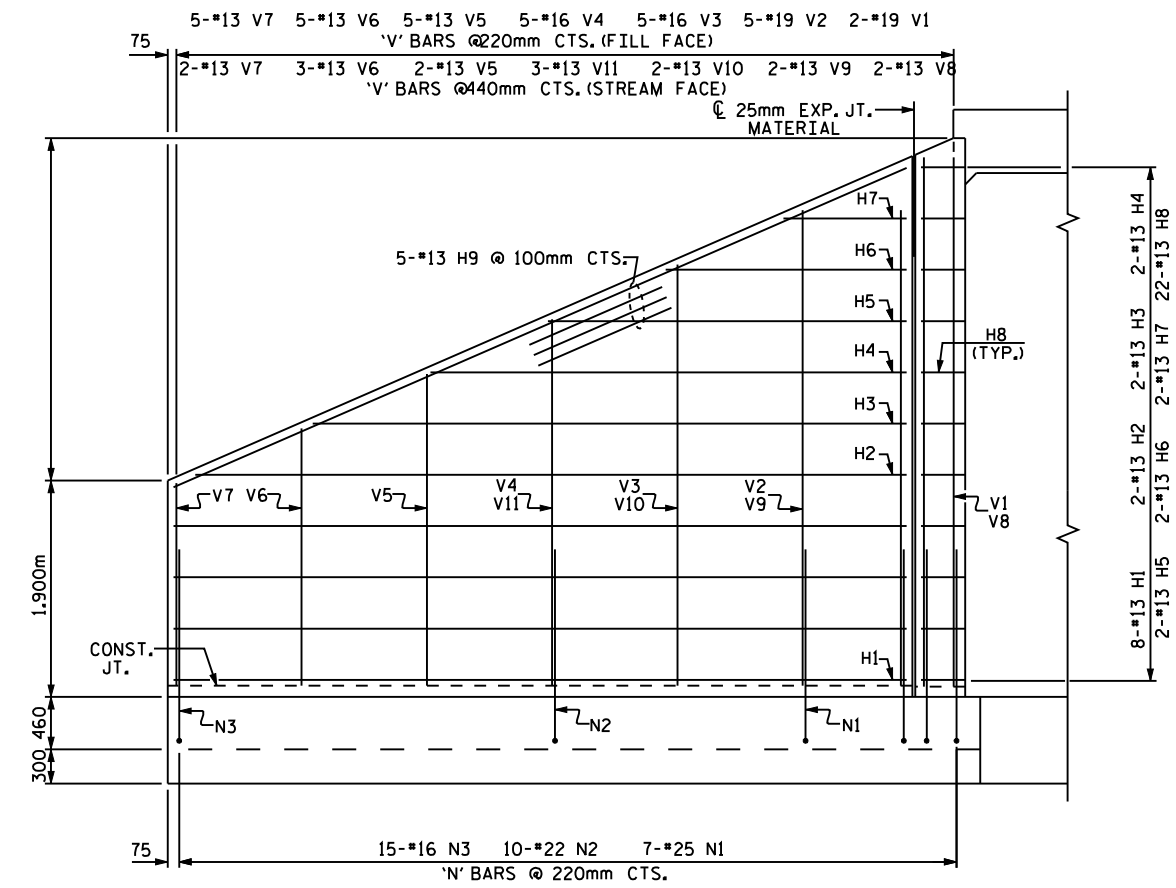
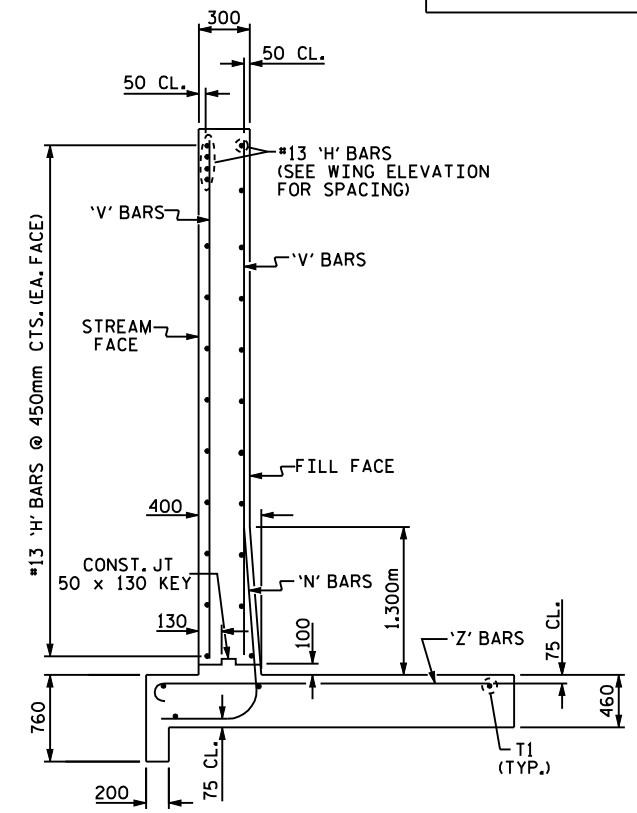


PLAN



ELEVATION



TYPICAL WING SECTION

**BAR TYPES**

ALL BAR DIMENSIONS ARE OUT TO OUT.

**BILL OF MATERIAL**

BAR NO.	SIZE	TYPE	LENGTH	WEIGHT	
H1	32	13	STR	6440	205
H2	8	13	STR	6240	50
H3	8	13	STR	5200	41
H4	8	13	STR	4180	33
H5	8	13	STR	3140	25
H6	8	13	STR	2100	17
H7	8	13	STR	1060	8
H8	88	13	1	980	86
H9	20	13	STR	7000	139
N1	28	25	2	2140	238
N2	40	22	2	2140	260
N3	60	16	2	2140	199
S1	12	19	STR	1800	48
T1	16	16	STR	7000	174
V1	8	19	STR	4620	83
V2	20	19	STR	4160	186
V3	20	16	STR	3680	114
V4	20	16	STR	3220	100
V5	28	13	STR	2740	76
V6	32	13	STR	2260	72
V7	28	13	STR	1780	50
V8	8	13	STR	4460	35
V9	8	13	STR	4080	32
V10	8	13	STR	3680	29
V11	12	13	STR	3120	37
Z1	24	19	3	3040	163
Z2	24	19	3	2700	145
Z3	20	19	3	2400	107
Z4	20	16	3	2100	65
Z5	20	13	3	1780	35
Z6	20	13	3	1500	30

REINFORCING STEEL FOR  
 4 WING WALLS 2882 kg

CLASS A CONCRETE

4 WINGS 64.7 m<sup>3</sup>  
 2 HEADWALLS m<sup>3</sup>  
 2 END CURTAIN WALLS m<sup>3</sup>  
 TOTAL m<sup>3</sup>

PROJECT NO. \_\_\_\_\_  
 \_\_\_\_\_ COUNTY  
 STATION: \_\_\_\_\_  
 SHEET OF \_\_\_\_\_

STATE OF NORTH CAROLINA  
 DEPARTMENT OF TRANSPORTATION  
 RALEIGH  
**STANDARD WINGS**  
 FOR  
**CONCRETE BOX CULVERT**  
 H = 4.600m SLOPE = 2 : 1  
 90° SKEW

ASSEMBLED BY : \_\_\_\_\_ DATE : \_\_\_\_\_  
 CHECKED BY : \_\_\_\_\_ DATE : \_\_\_\_\_  
 DRAWN BY : FPP 05/97  
 CHECKED BY : VAP 08/97

REVISIONS				SHEET NO.	
NO.	BY:	DATE:	NO.	BY:	DATE:
1			3		
2			4		

TOTAL SHEETS